

**MAINTENANCE
SECTORS**



Portable cylinder head resurfacing machine

Presentation 2006



**CAREERS
IN MACHINING
COMBUSTION
MOTORS**



Portable cylinder head resurfacer

➔ History

Until now, classic procedures required bringing the motor or the parts needing a machine finish to a precision ***machinist center*** to be repaired. Our offer reverses these market constraints. The company MTAI-Engine SA is endowed with extensive savoir-faire in the fields of maintenance, innovation and the needs of this market and has, since its first stages, and without any preliminary communication, elicited the interest of numerous clients and investors throughout the world. The concept's novelty resides in changing mindsets about the subject of mechanical fabrication.

The inflexibility imposed by the current mechanical reparation procedures has led us to reflect upon a new concept of maintenance, and, more precisely, ***to elaborate a new, easy way to address the precision machining trade***. The base of this concept was strongly inspired by the evolution of computer technology, and we have aided in the transition from heavy, very specialized materials to that of portable and versatile micro-computing.

It is now a question of ***transferring the machine, which is now portable***, to the place where the parts that need to be restored to working order are located. Heavy and bulky materials are thus replaced by mobile machines, which are adaptable and therefore allowing more efficiency. Our machines are simple to use and no longer require an expert workman for operation.

➔ Innovative elements

The advantages observed by using the portable cylinder head resurfacer in place of the traditional resurfacers are :

➔ Product innovation* evaluated at	71%
Acquisition costs reduced by	25%
Maintenance costs reduced by	40%
Weight and size reduced by	90%
Implementation	70%
Maintenance reduced by	60%
Portable materiel	100%
Complexity of work reduced by	70%
Level of initial special training reduced by	90%
Work time reduced by	70%
Waiting periods reduced by	99%

* A product is said to be innovative when it completely changes the conditions in which market players use the product and when it is accompanied by a remarkable technological breakthrough.



MTAI-engine : savoir-faire

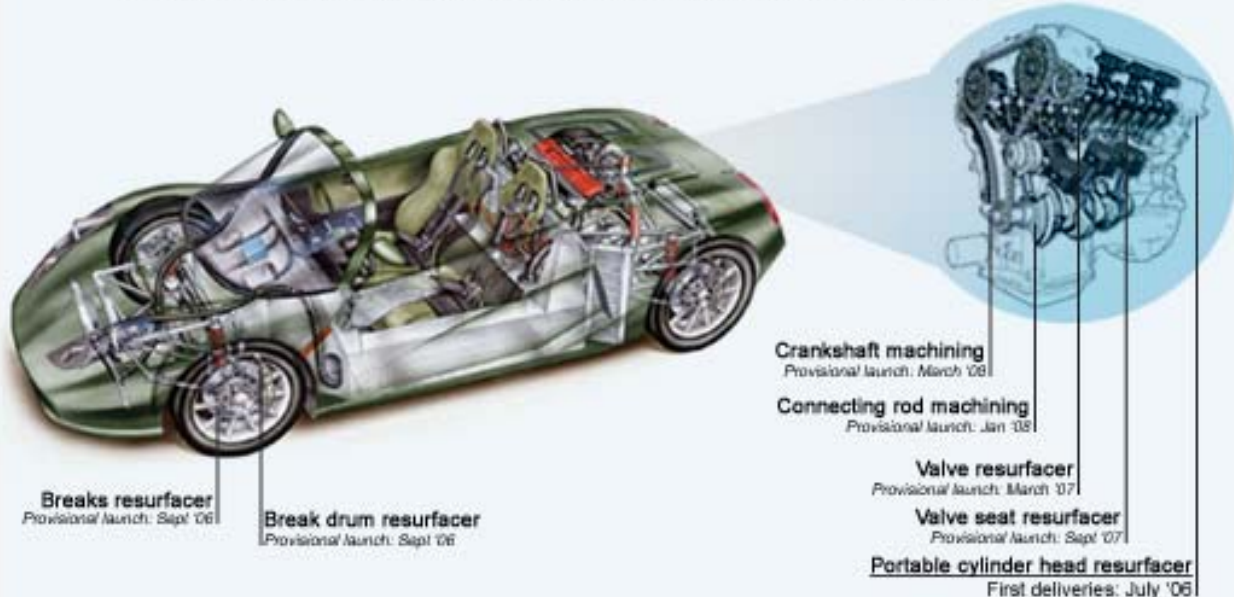
➤ Experience

The company MTAI-Engine SA, is composed, above all, of men, savoir-faire and multidisciplinary proficiency in state-of-the-art mechanics and new technologies. Groups such as **Aérospatiale**, **Air France**, **Moulinex** and **Télémécanique** have called upon our experience in the following sectors :

- ➔ Optical mechanics ;
- ➔ Experimental engineering ;
- ➔ Expertise of materials under spatial constraints ;
- ➔ Creation of mechanical equipment ;
- ➔ Implementing networks of experts.

➤ A complete line of portable resurfacers/machining

The portable cylinder head refacer is part of a complete line of **transportable machines** and equipment, which satisfies the same market constraints and demands.



➤ Technological intelligence department

In a permanent market evolution context, MTAI-Engine SA strategic intelligence, in particular the technological intelligence department, plays an essential role for the duration of its offer.

In effect, in order to provide its clientele with a complete range of products that are always more competitive, products that are at the pinnacle of the latest technological trends and procedures, MTAI-Engine SA promises to keep a constant eye on the technological, sales and competitive environment.

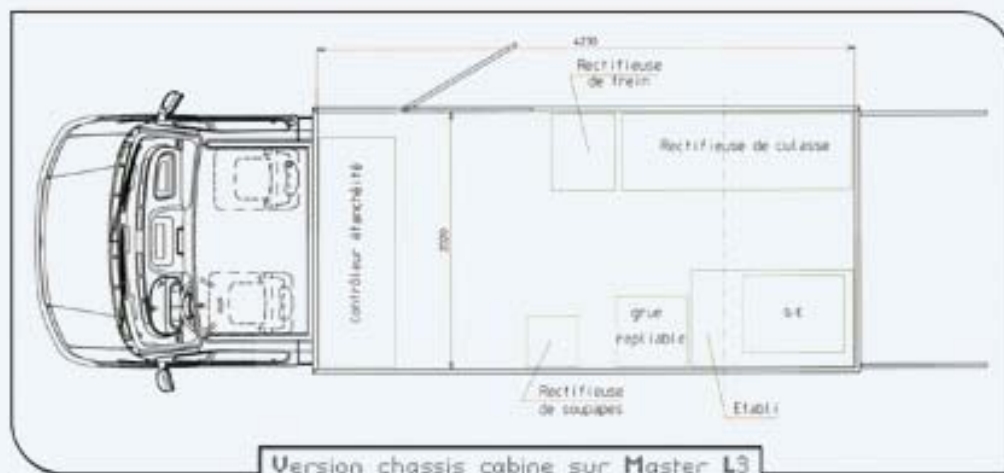
Reliable transportability

➡ DYNAREC : premier vehicle-workshop

DYNAREC TM's concept comes from its power to design and personalize **vehicle-workshops** according to each client's specific needs or according to the type of targeted operation, thereby **optimizing its transportability and the operation's on site procedure**.

These unparalleled performances are thus obtained as much for the client (waiting time reduced by 94%) as for the mechanic (technical complexity simplified by 70%).

DYNAREC TM's vehicle-workshop completely stand out from the current vehicle solution options, wherein the action is limited to simply **replacing** faulty elements, while DYNAREC TM allows a **real repair** of malfunctioning vehicles.



➡ DYNAREC : a « key in hand » vehicle-workshop

This vehicle-workshop, created by MTAI-Engine SA, will be equipped with a portable cylinder head resurfacer which can be added to the portable break resurfacer (disks and pulleys) and the portable manual control valve resurfacer. DYNAREC TM will also be equipped with an electric motor, with cylinder head airtightness tester and a fully equipped workbench.

➡ DYNAREC : a wide choice of professional vehicles

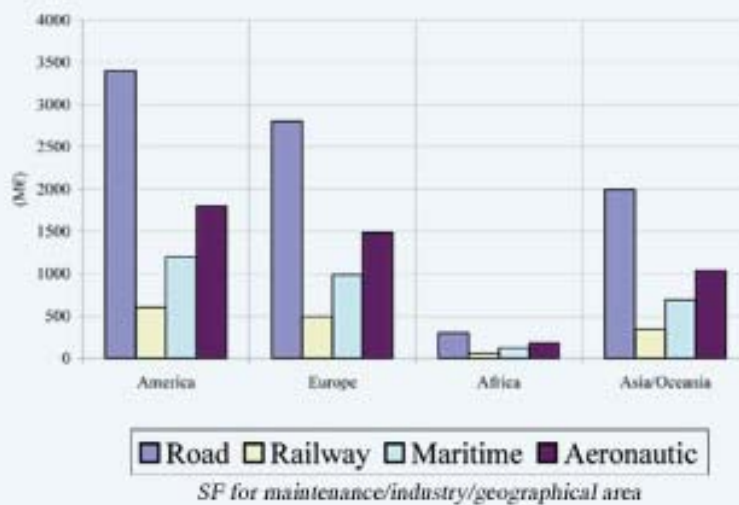


International Development

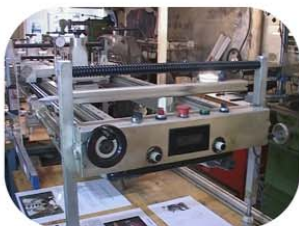
➡ Become a privileged partner

Becoming a MTAI-Engine SA partner (secondhand dealer, distributor, agent, franchisor) means benefiting from mechanical savoir-faire in cutting edge machining, from an in-depth knowledge of the machining market, from a commercial dynamic on an international scale and from a network of professionals from multiple sectors.

For more information, write to partner@mtai-engine.com



A



B



C



D



2



3



4

