

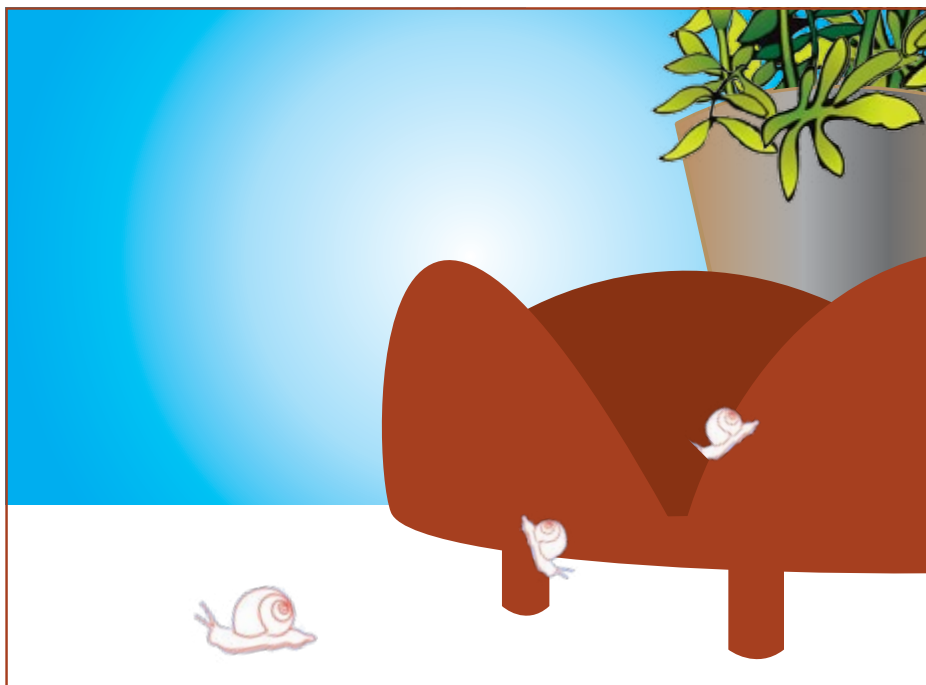
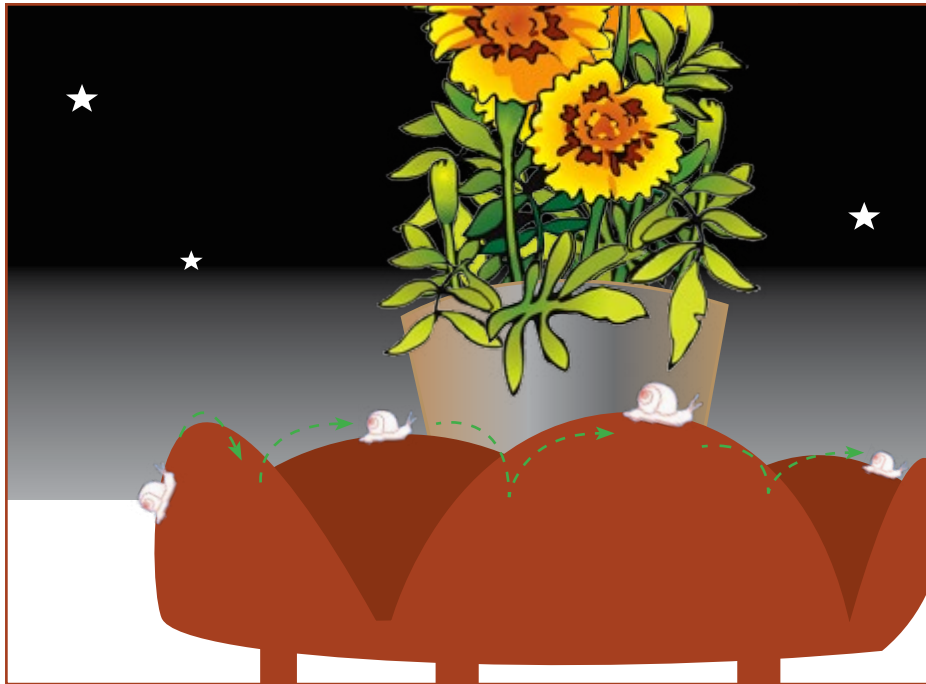
Flower Fortress

bio friendly slug/snail deterrent pot stand

The answer to Gardeners' prayers
Banishes threats to pot plants and succulents
Bio friendly

Slugs and snails are the scourge of precious pot plants. The 'Flower Fortress' stops over 90% of slugs and snails from damaging pot plants without harming the slugs or the environment in any way. It's easy to use and safe for children and pets.

The Flower Fortress is a novel, circular pot-stand ringed by two interlocking sets of six parabolic curves suitable to receive a variety of sizes of pot, standing slightly clear of the ground on four feet. Many slugs and snails just crawl right underneath, but some will find the feet and follow the smell of the plant upwards. In the case of conventional pot stands, this means the slug can happily climb up the pot and feast on the precious plant within.



Flower Fortress

bio friendly slug/snail deterrent pot stand

With the Flower Fortress however, once the slug reaches the apex of the outer curve, it cannot go any higher, so searches sideways and all it finds is the inner curve. The slug crosses and climbs up to the apex of the inner curve and the whole process starts again — effectively detracting the hungry gastropod from its target.

These creatures will travel on all night crossing from one curve to the other without ever reaching the pot-plant, until morning arrives and they instinctively look for the way down. The inner curves do not travel as far down in their curves as the outer ones, so the slug crosses to an outer curve to get back down to the ground and leaves the plant undisturbed. It might be very hungry, but it is otherwise unharmed.

The Flower Fortress is completely safe and is conveniently 17" wide by 5" tall to accommodate most containers but could be available in larger sizes to suit. All are designed to be stackable when not in use or being retailed.

Flower Fortress

bio friendly slug/snail deterrent pot stand

INSTRUCTIONS FOR USE

- Position on solid firm surface
- 3" clear space away from walls, overhanging trees, shrubs or plants
- 3" clearance in all directions from the top of the inner curves
- Trim trailing plants to 3" above curves
- Excellent drainage – do not make drainage holes!
- Use individually or side by side
- Pot can be up to 12" across at top or up to 16" if bell shaped
- Base of pot must fit within guidance ridge in the middle of the Flower Fortress
- Don't allow slugs snails or eggs in pot with plants
- Basic maintenance only needed, e.g. remove detritus – clear anything which blows inside or against it, or in between the curves

